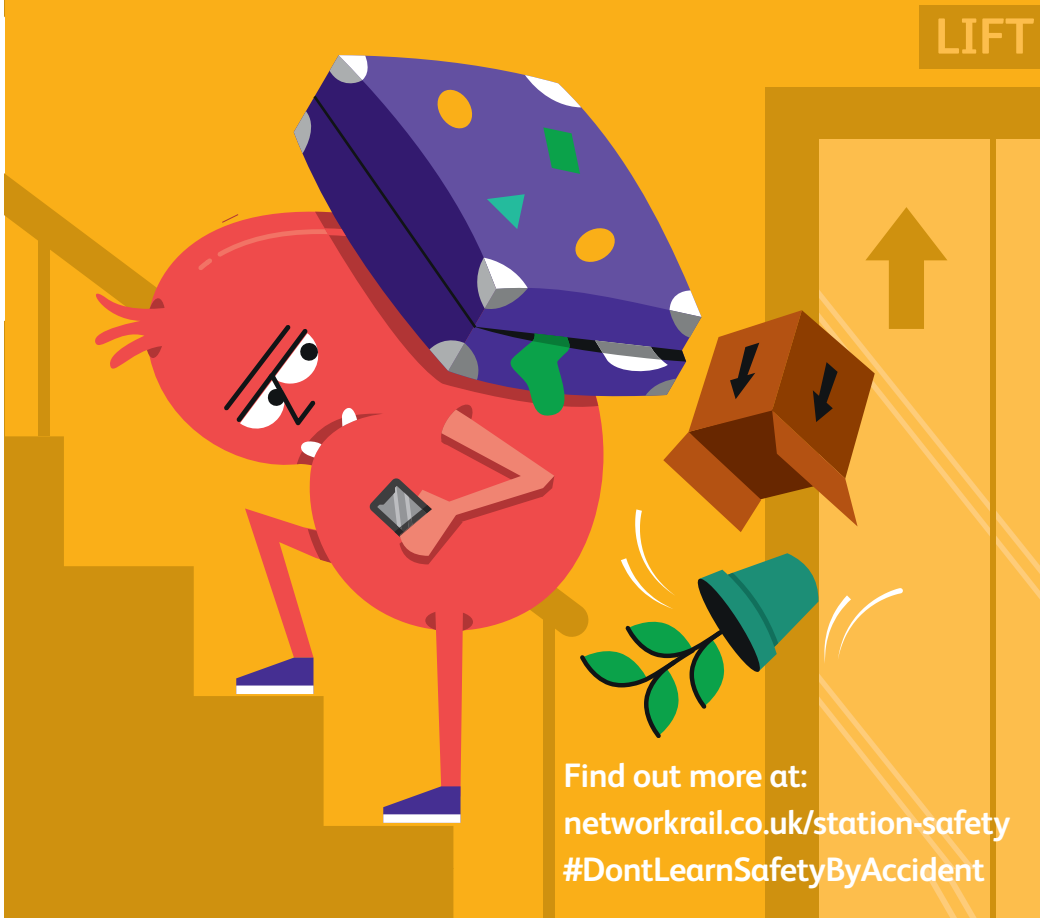


**Too much to carry?  
Here's the trick.  
Take the lift,  
it's safe and quick.**

**Don't Learn Safety by Accident.**



Find out more at:  
[networkrail.co.uk/station-safety](http://networkrail.co.uk/station-safety)  
[#DontLearnSafetyByAccident](https://twitter.com/DontLearnSafetyByAccident)