

1



2



Stop  
Look  
Listen

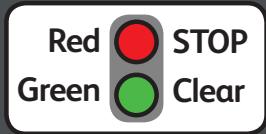
Notify crossing operator before crossing with a vehicle which is unusually long, wide, low, heavy or slow moving.

# Stop Look Listen

Notify crossing operator before crossing with a vehicle which is unusually long, wide, low, heavy or slow moving.

- 1 Open both gates and look in both directions before crossing.
  - 2 Cross quickly.
  - 3 Close and secure gates after use.
- Maximum penalty for not doing so £1000





# Stop Look Listen

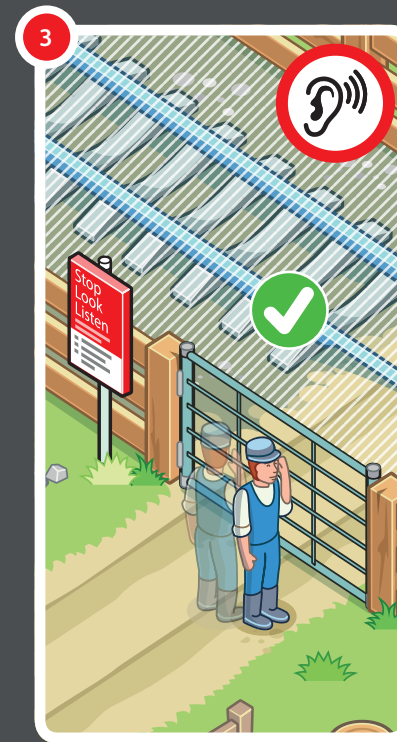
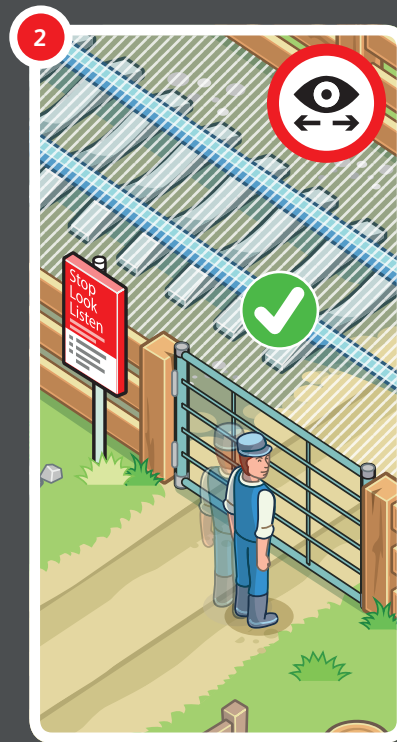
Notify crossing operator  
before crossing with a vehicle  
which is unusually long, wide,  
low, heavy or slow moving.

1 Open both gates and look in both  
directions before crossing.

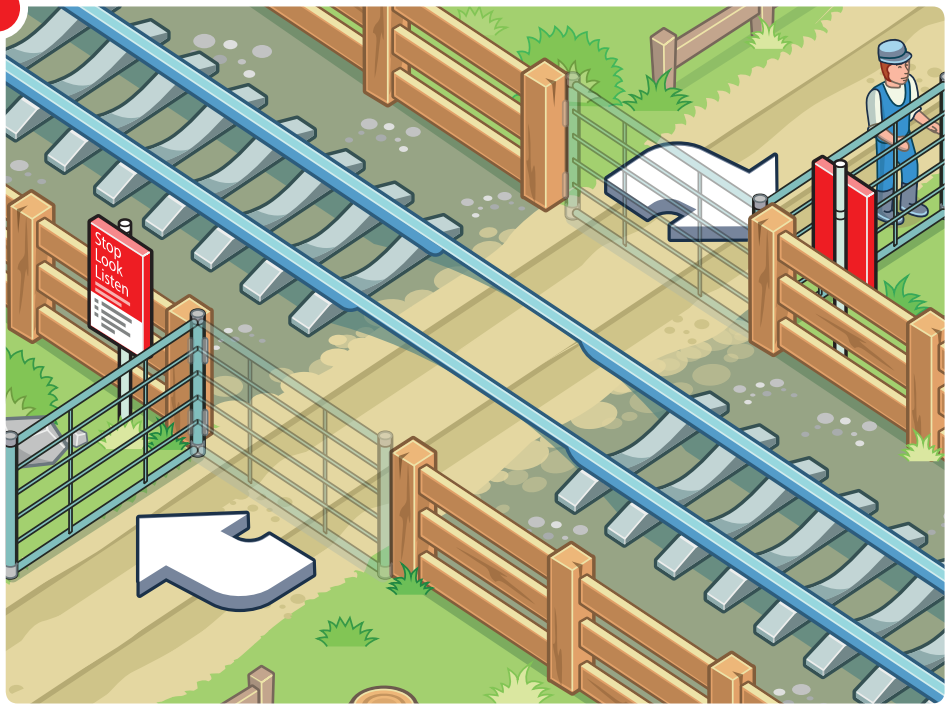
2 Cross quickly.

3 Close and secure gates after use.

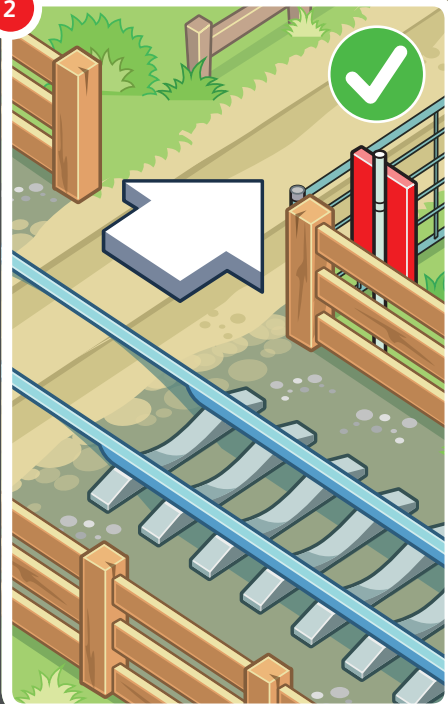
Maximum penalty for not doing so  
£1000



1

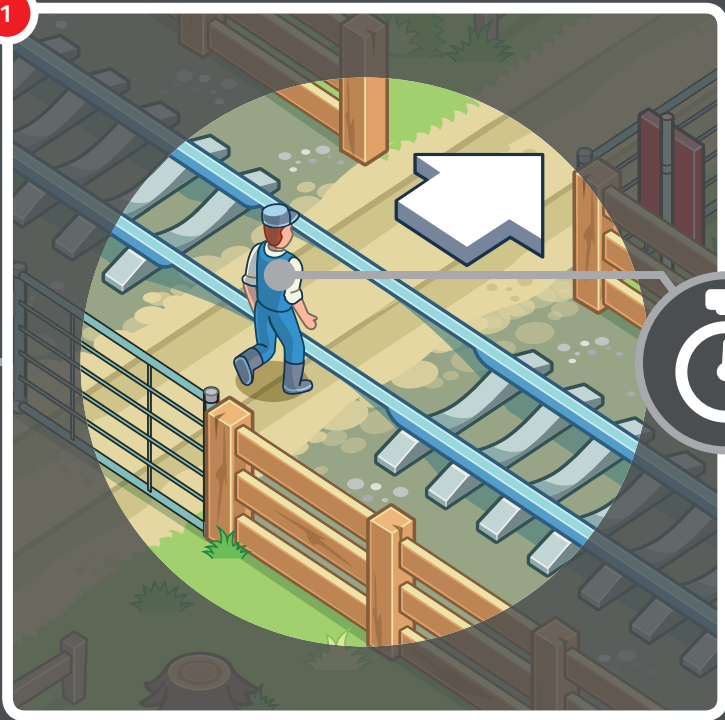


2



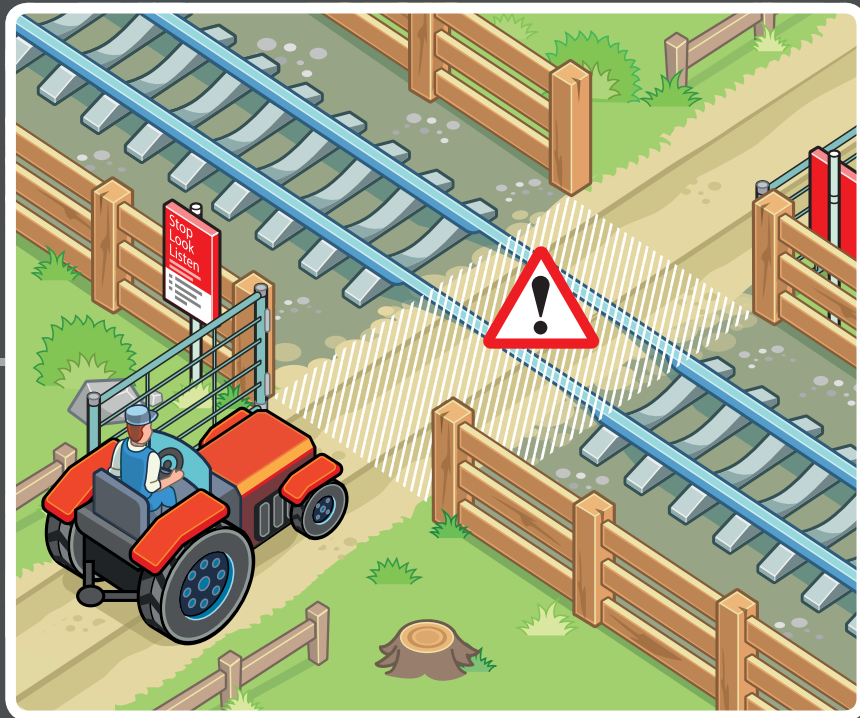


1



2





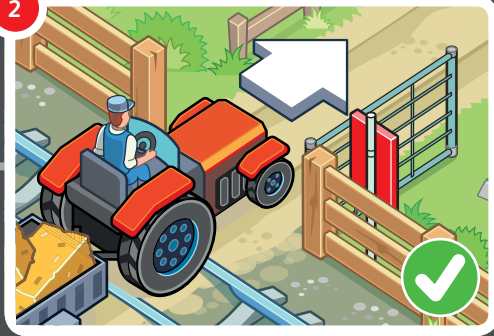


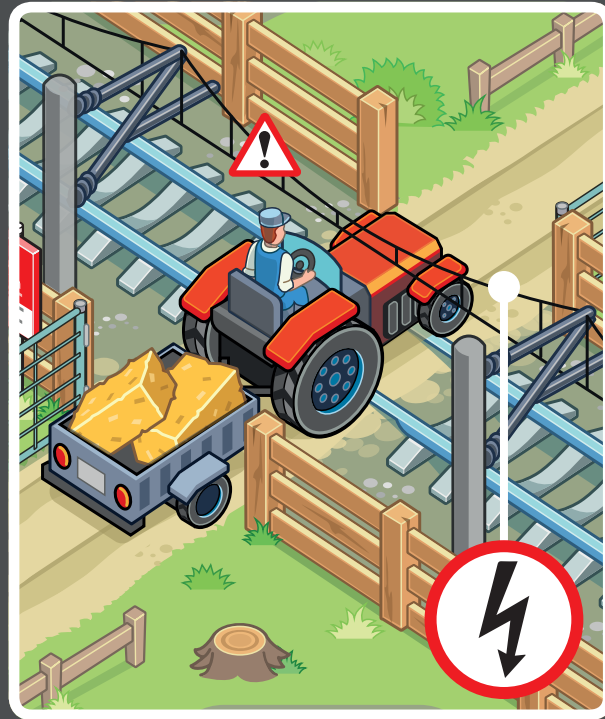
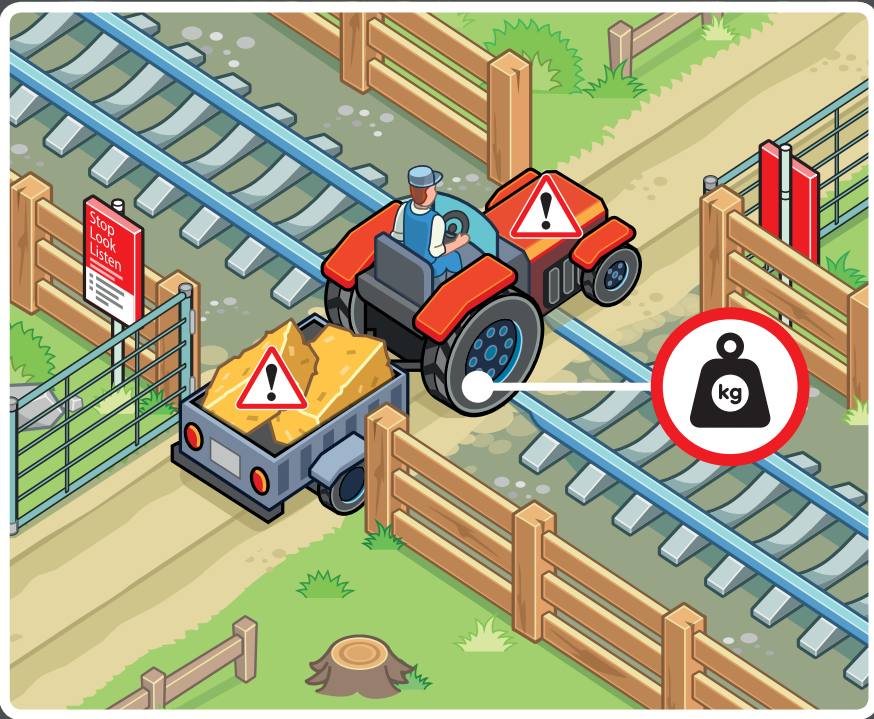


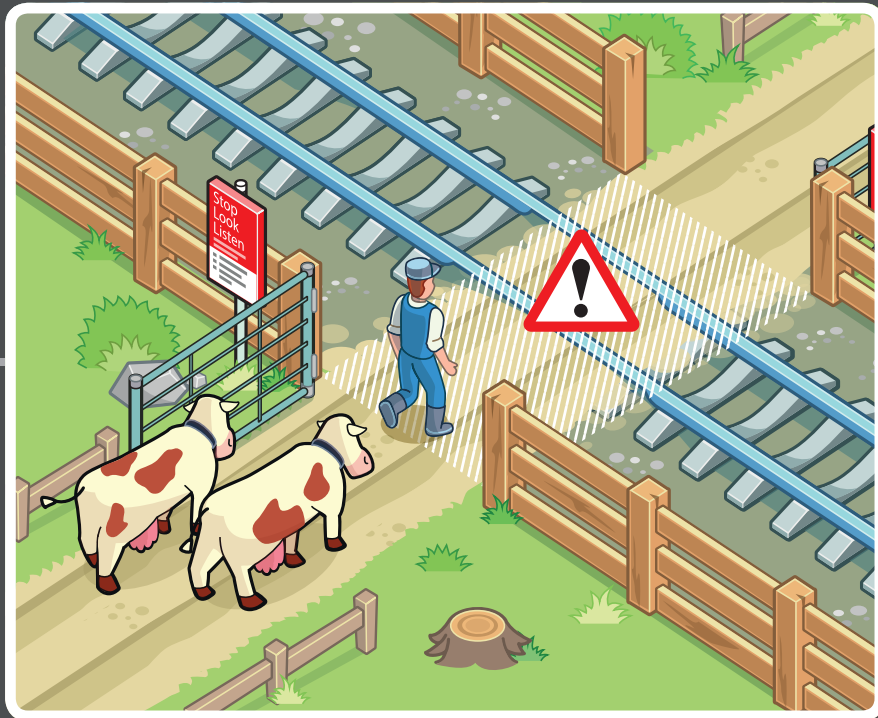
1

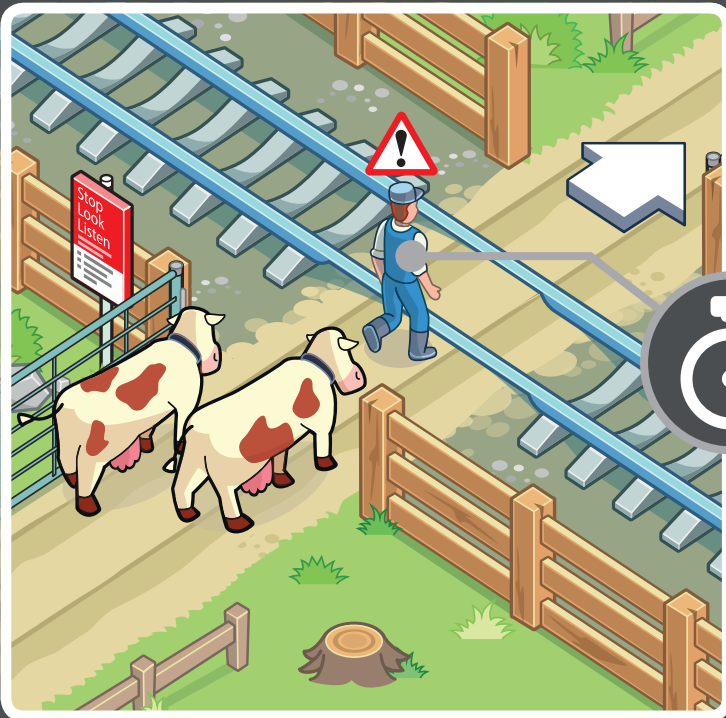


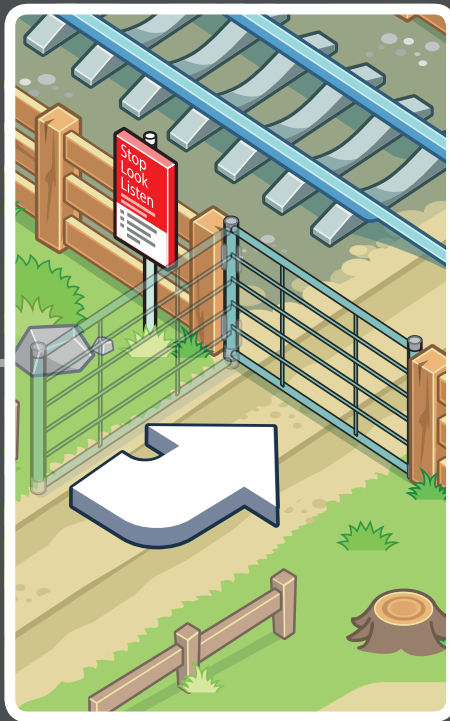
2







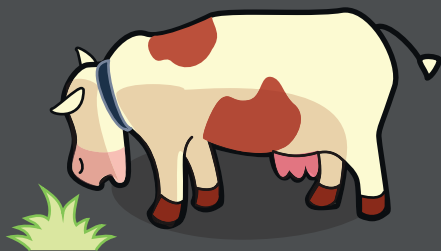






03457 11 41 41

In association with



[networkrail.co.uk/levelcrossings](http://networkrail.co.uk/levelcrossings)